



\$ FOREST GREEN



\$ HARTFORD GREEN



▲★\$ MILITARY BLUE



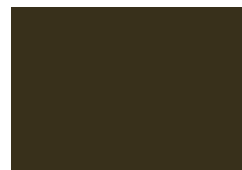
\$ BERKSHIRE BLUE



▲★\$ SLATE BLUE



\$ AWARD BLUE



▲\$ AGED BRONZE



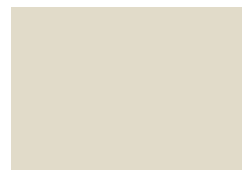
▲★\$ MEDIUM BRONZE



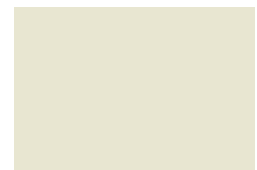
▲★\$ CARDINAL RED



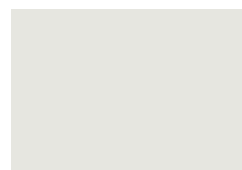
▲★\$ COLONIAL RED



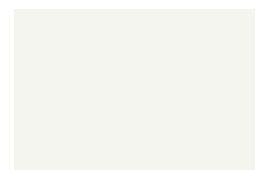
▲★\$ SANDSTONE



▲★\$ ALMOND



▲★\$ STONE WHITE

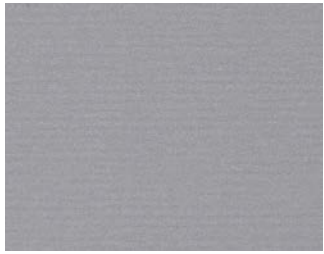


▲★\$ BONE WHITE

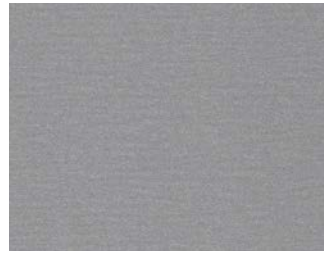
Color Guide

PAC-CLAD.COM

Premium Colors



●▲★\$ ANODIC CLEAR



●▲★\$ SILVERSMITH



●▲★\$ SILVER



●▲★\$ CHAMPAGNE



●▲★\$ ZINC



●▲★\$ WEATHERED ZINC



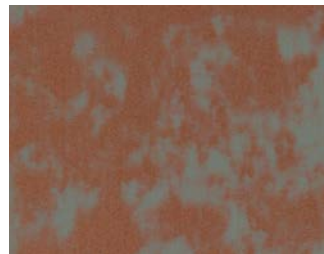
●▲★\$ COPPER PENNY



●▲★\$ AGED COPPER



●▲★\$ WEATHERED STEEL



●▲★\$ WEATHERED COPPER

Kynar 500® or Hylar 5000® pre-finished steel and aluminum for roofing, curtainwall and storefront applications.



● Metallic Colors ★ ENERGY STAR® Colors \$ Pricing
▲ Cool Colors 🏰 Premium Colors

See back for color availability chart.

Standard Colors



▲★\$ PATINA GREEN



▲★\$ TEAL



▲★\$ HEMLOCK GREEN



\$ FOREST GREEN



\$ HARTFORD GREEN



▲★\$ EVERGREEN



▲★\$ HUNTER GREEN



▲★\$ ARCADIA GREEN



▲★\$ MILITARY BLUE



\$ BERKSHIRE BLUE



▲\$ GRAPHITE



▲★\$ CHARCOAL



\$ INTERSTATE BLUE



▲★\$ SLATE BLUE



\$ AWARD BLUE



\$ MATTE BLACK



▲★\$ DARK BRONZE



▲\$ BURNISHED SLATE



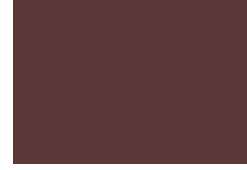
▲\$ AGED BRONZE



▲★\$ MEDIUM BRONZE



▲★\$ MANSARD BROWN



\$ BURGUNDY



▲★\$ TERRA COTTA



▲★\$ CARDINAL RED



▲★\$ COLONIAL RED



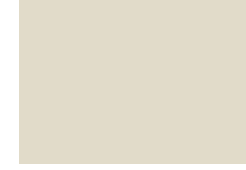
\$ MIDNIGHT BRONZE



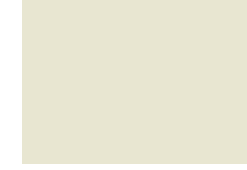
▲★\$ MUSKET GRAY



▲★\$ SIERRA TAN



▲★\$ SANDSTONE



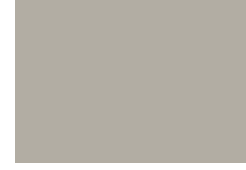
▲★\$ ALMOND



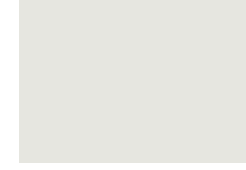
▲★\$ SLATE GRAY



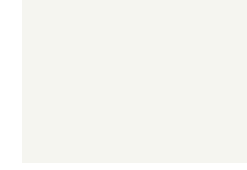
▲★\$ CITYSCAPE



▲★\$ GRANITE



▲★\$ STONE WHITE



▲★\$ BONE WHITE



PAC-CLAD
P E T E R S E N

HQ: 800 PAC CLAD TX: 800 441 8661 MD: 800 344 1400
AZ: 833 750 1935 GA: 800 272 4482 MN: 877 571 2025

PAC-CLAD.COM

PAC-CLAD® Color Availability

PAC-CLAD STANDARD COLORS	REFLECTIVITY	EMISSION	3 YEAR EXPOSURE	SRI	STEEL		ALUMINUM				ENERGY STAR
					24 GA.	22 GA.	.032	.040	.050	.063	
AGED BRONZE	0.28	0.86	N/A	27	✓						
ALMOND	0.53	0.87	0.52	62	✓	✓	✓	✓	✓		★
ARCADIA GREEN	0.30	0.88	0.30	31	✓		✓				★
AWARD BLUE	0.21	0.86	0.20	18	✓		✓		✓		
BERKSHIRE BLUE*	0.26	0.87	0.25	25	✓						
BLACK ALUMINUM**	0.20	0.86	0.19	17			✓	✓	✓	✓	
MATTE BLACK STEEL**	0.23	0.87	0.22	21	✓	✓					
BONE WHITE	0.65	0.86	0.64	78	✓	✓	✓	✓	✓	✓	★
BURGUNDY	0.23	0.87	0.22	21	✓		✓		✓		
BURNISHED SLATE	0.29	0.85	N/A	28	✓						
CARDINAL RED	0.36	0.86	0.36	38	✓		✓		✓		★
CHARCOAL	0.26	0.87	0.26	25	✓		✓		✓		★
CITYSCAPE	0.43	0.87	0.43	48	✓	✓	✓	✓	✓		★
COLONIAL RED	0.32	0.88	0.32	34	✓		✓	✓	✓		★
DARK BRONZE	0.26	0.88	0.26	26	✓	✓	✓	✓	✓	✓	★
EVERGREEN	0.25	0.86	0.23	24	✓		✓				★
FOREST GREEN	0.10	0.87	0.10	5	✓	✓	✓	✓	✓		
GRANITE*	0.36	0.87	0.36	39	✓	✓	✓	✓	✓		★
GRAPHITE	0.27	0.86	N/A	26	✓						
HARTFORD GREEN	0.09	0.88	0.09	4	✓		✓	✓	✓		
HEMLOCK GREEN	0.30	0.85	0.31	30	✓		✓		✓		★
HUNTER GREEN	0.26	0.86	0.25	25	✓		✓				★
INTERSTATE BLUE	0.13	0.87	0.12	8	✓		✓		✓		
MANSARD BROWN	0.28	0.85	0.28	27	✓	✓	✓	✓	✓		★
MEDIUM BRONZE	0.25	0.88	0.24	24	✓	✓	✓	✓	✓	✓	★
MIDNIGHT BRONZE	0.06	0.88	N/A	0	✓			✓			
MILITARY BLUE	0.29	0.87	0.28	30	✓		✓				★
MUSKET GRAY	0.28	0.87	0.27	28	✓	✓	✓		✓		★
PATINA GREEN	0.34	0.86	0.33	35	✓		✓				★
SANDSTONE	0.46	0.87	0.46	52	✓	✓	✓	✓	✓	✓	★
SIERRA TAN	0.31	0.87	0.31	32	✓	✓	✓	✓	✓		★
SLATE BLUE	0.23	0.87	0.22	21	✓		✓				★
SLATE GRAY	0.35	0.88	0.34	38	✓	✓	✓	✓	✓		★
STONE WHITE	0.67	0.85	0.65	80	✓	✓	✓	✓	✓	✓	★
TEAL	0.26	0.87	0.26	25	✓		✓				★
TERRA COTTA	0.36	0.88	0.35	39	✓		✓		✓		★
PAC-CLAD PREMIUM COLORS											
AGED COPPER	0.25	0.87	0.24	24	✓		✓		✓		★
ANODIC CLEAR	0.55	0.80	N/A	62				✓			
CHAMPAGNE	0.40	0.82	0.36	42	✓		✓	✓	✓		★
COPPER PENNY	0.45	0.87	0.44	51	✓		✓	✓	✓		★
SILVER	0.48	0.81	0.46	53	✓	✓	✓	✓	✓		★
SILVERSMITH	0.52	0.81	N/A	58				✓			
WEATHERED COPPER	0.45	0.88	N/A	51	✓						
WEATHERED STEEL	0.32	0.89	N/A	34	✓						
WEATHERED ZINC	0.25	0.82	0.24	22	✓	✓	✓		✓		★
ZINC	0.30	0.88	0.29	31	✓		✓	✓	✓		★
CLEAR-COAT ACRYLIC FINISH (NON-KYNAR)											
GALVALUME PLUS	0.68	0.14	0.55	57	✓	✓					★

PAC-CLAD Premium finishes are available from stock at a moderate extra cost. PAC-CLAD Copper Penny is a Non-Weathering finish. Solar Reflectance Index calculated according to ASTM E-1980.

*Low Gloss/Low Sheen, 70% PVDF finish ** Appearance differs for Black Aluminum and Matte Black Steel

ENERGY STAR PERFORMANCE CRITERIA:

Emissivity uses ASTM C1371 Reflectivity uses ASTM C1549.

TECHNICAL DATA FOR KYNAR 500/HYLAR 5000 COATING:

- ▶ South Florida Exposure: Color (ASTM D 2244) - No more than 5ΔE Hunter units at 20 years; Chalk (ASTM D 4214) - Rating no less than 8 at 20 years; Film integrity - 20 years.
- ▶ Accelerated Weathering (ASTM D 4587, ASTM G 154): 5000 Hours; Chalk, per ASTM D 4214, rating of 6 or better; Color, per ASTM D 2244, < 5ΔE (Hunter Units) color change.

- ▶ Humidity Resistance (ASTM D 2247): Galvalume or HDG, 100% RH, 2000 hours - No field blisters; Aluminum, 100% RH, 3000 hours - No field blisters
- ▶ Salt Spray Resistance (ASTM B 117): Aluminum, 3000 hours, Galvalume or HDG, 1000 hours - Creep from scribe no more than 1/16", no field blisters
- ▶ Chemical/Acid Pollution Resistance (ASTM D 1308): Pass
- ▶ T-Bend (ASTM D 4145): 1T - 3T with no loss of adhesion
- ▶ Pencil hardness (ASTM D 3363): HB - 2H
- ▶ Specular Gloss (ASTM D 523) @ 60 degrees: Typical - 20 - 35

- ▶ Abrasion Resistance (ASTM D 968): 67 +/- 10 liters
- ▶ Cross Hatch Adhesion (ASTM D 3359): No loss of adhesion
- ▶ Reverse Impact (ASTM D 2794): Galvalume or HDG, 2x metal thickness inch-pounds, no loss of adhesion; Aluminum, 1.5x metal thickness inch-pounds, no loss of adhesion
- ▶ Flame Test (ASTM E 84): Class A Coating

PVDF WOOD GRAIN FINISHES



When the performance of metal is required but the look of wood is desired, Petersen's wood grain textures are ready to dazzle. Petersen's PAC-CLAD wood grain patterns will convince the casual observer that metal is actually wood. A lineup of 16 wood grain patterns ensures creative design and flexibility and can deliver a finishing touch to any project.

PAC-CLAD PVDF wood grain finishes combine the beauty of wood with the durability of metal. The patterns are nearly indistinguishable from actual wood, and they provide architects and designers with creative flexibility on highly functional surfaces. Wood grain finishes are available on all PAC-CLAD roof and wall panels. Not all colors are stocked, so consult PAC-CLAD representative to discuss warranty, lead time and related issues.



Charwood



Dark Oak



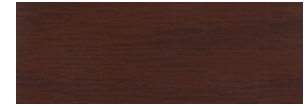
Medium Oak



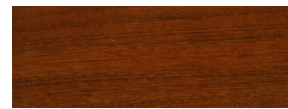
Long Grain Oak



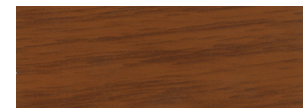
Sycamore



Red Oak



Copper



Cherrywood Oak*



Long Grain Cherry



Golden Maple



Light Oak



Golden Bamboo*



Sugar Maple



Siamese Bamboo



Beechwood*



Whitewash Oak

MATERIAL

- ▶ Steel: 22, 24 gauge
- ▶ Aluminum: .032, .040, .050
- ▶ Colors above marked with an * are stocked in .040 aluminum. All other colors and gauges are available but with extended lead times.



HQ: 1005 Tonne Road
Elk Grove Village, IL 60007
P: 800-PAC-CLAD
F: 800-722-7150

9060 Junction Drive
Annapolis Junction, MD 20701
P: 800-344-1400
F: 301-953-7627

10551 PAC Road
Tyler, TX 75707
P: 800-441-8661
F: 903-581-8592

102 Northpoint Parkway
Acworth, GA 30102
P: 800-272-4482
F: 770-420-2533

1800 S. 7th Ave., Suite 130
Phoenix, AZ 85007
P: 833-750-1935
F: 602-254-6504

1885 Station Parkway NW, Suite B
Andover, MN 55304
P: 877-571-2025
F: 866-901-2935

